

A misty forest of evergreen trees, likely spruce or fir, with a soft, hazy atmosphere. A large, solid black diagonal shape cuts across the image from the top-left corner towards the bottom-right corner. The text is centered over the white area of this diagonal.

AUTHENTICS

by Coretec®

EN



AUTHENTICS *by Coretec*

NATURAL STYLE, PREMIUM PERFORMANCE

Home is where you can be your truest self. Where you walk around barefoot after a long day. The place you watch your kids grow up in, spilling ice cream along the way. Where your dog follows you around, leaving trails of fun-filled outdoor walks.

*Your home expresses who you are. It's authentic. To the core.
Just like our Authentics Collection.*

Mirroring genuine wood and stone, these new designs are as real as it gets. Unparalleled 3-dimensional structure. Exceptionally natural appearance. Undeniable durability. Designed for real homes and real people.
Can you feel it?

AUTHENTICS

by Coretec

Naturally,
we thought about
(almost)
every benefit.

100% WATERPROOF



EXTREMELY STABLE



PET PROOF



REDUCES NOISE



EASY TO INSTALL



INSTALLATION ON ANY SURFACE



NO ACCLIMATISATION
NECESSARY



IDEAL FOR UNDERFLOOR
HEATING & COOLING



ELECTROSTATIC PERFORMANCE



WEAR RESISTANCE



0.55 mm
WEAR
LAYER

8 mm
TOTAL
THICKNESS

26
WOOD
DESIGNS

6
STONE
DESIGNS

CORK
BACKING



4 IN
HERRINGBONE

AUTHENTICS *by Coretec*

COLLECTION OVERVIEW



AS AUTHENTIC AS NATURE CAN BE

AUTHENTICS
by Coretec

SERIES
180 X 1830 mm



EMERALD
50 LVRE 110
180 X 1830 mm



ONTARIO
50 LVRE 111
180 X 1830 mm



ERIE
50 LVRE 112
180 X 1830 mm



MORAINÉ
50 LVRE 113
180 X 1830 mm

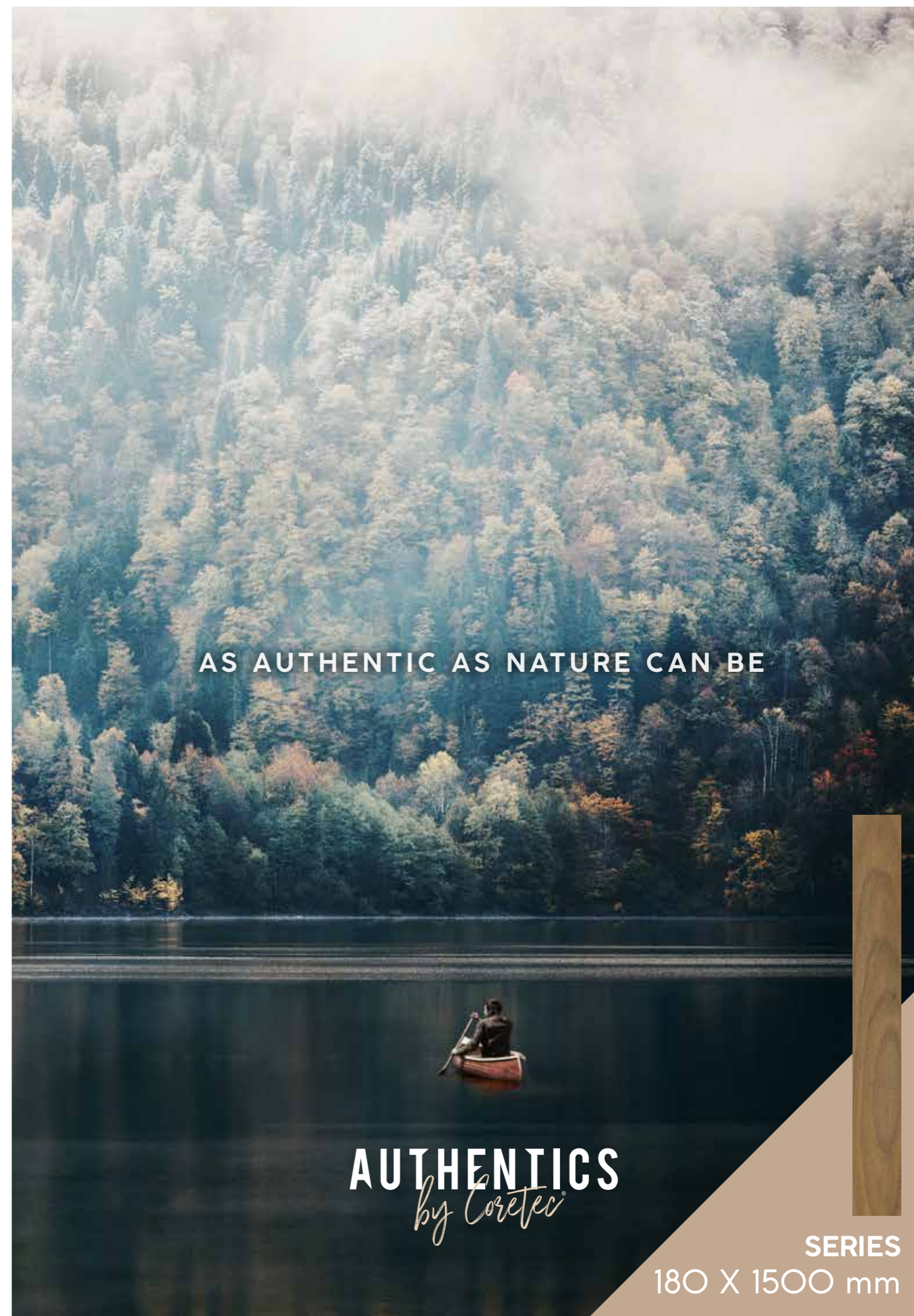




WINNIPEG
50 LVRE 114
180 X 1830 mm



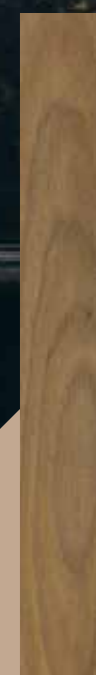
CHAMPLAIN
50 LVRE 115
180 X 1830 mm



AS AUTHENTIC AS NATURE CAN BE

AUTHENTICS
by Coretec

SERIES
180 X 1500 mm





KLUONE
50 LVRE 120
180 X 1500 mm



TORONTO
50 LVR 127
180 X 1500 mm



NUELTIN
50 LVRE 122
180 X 1500 mm



LOUISE
50 LVR 124
180 X 1500 mm





WILLISTON
50 LVRE 121
180 X 1500 mm



HURON
50 LVR 125
180 X 1500 mm



MANITOBA
50 LVRE 123
180 X 1500 mm



OTTOWA
50 LVR 126
180 X 1500 mm

AUTHENTICS *by Coretec*

AS AUTHENTIC AS NATURE CAN BE



SERIES
180 X 1220 mm



VANCOUVER
50 LVRE 130
180 X 1220 mm



MONTREAL
50 LVR 131
180 X 1220 mm

CALGARY
50 LVR 132
180 X 1220 mm



EDMONTON
50 LVR 133
180 X 1220 mm



QUÉBEC
50 LVR 134
180 X 1220 mm



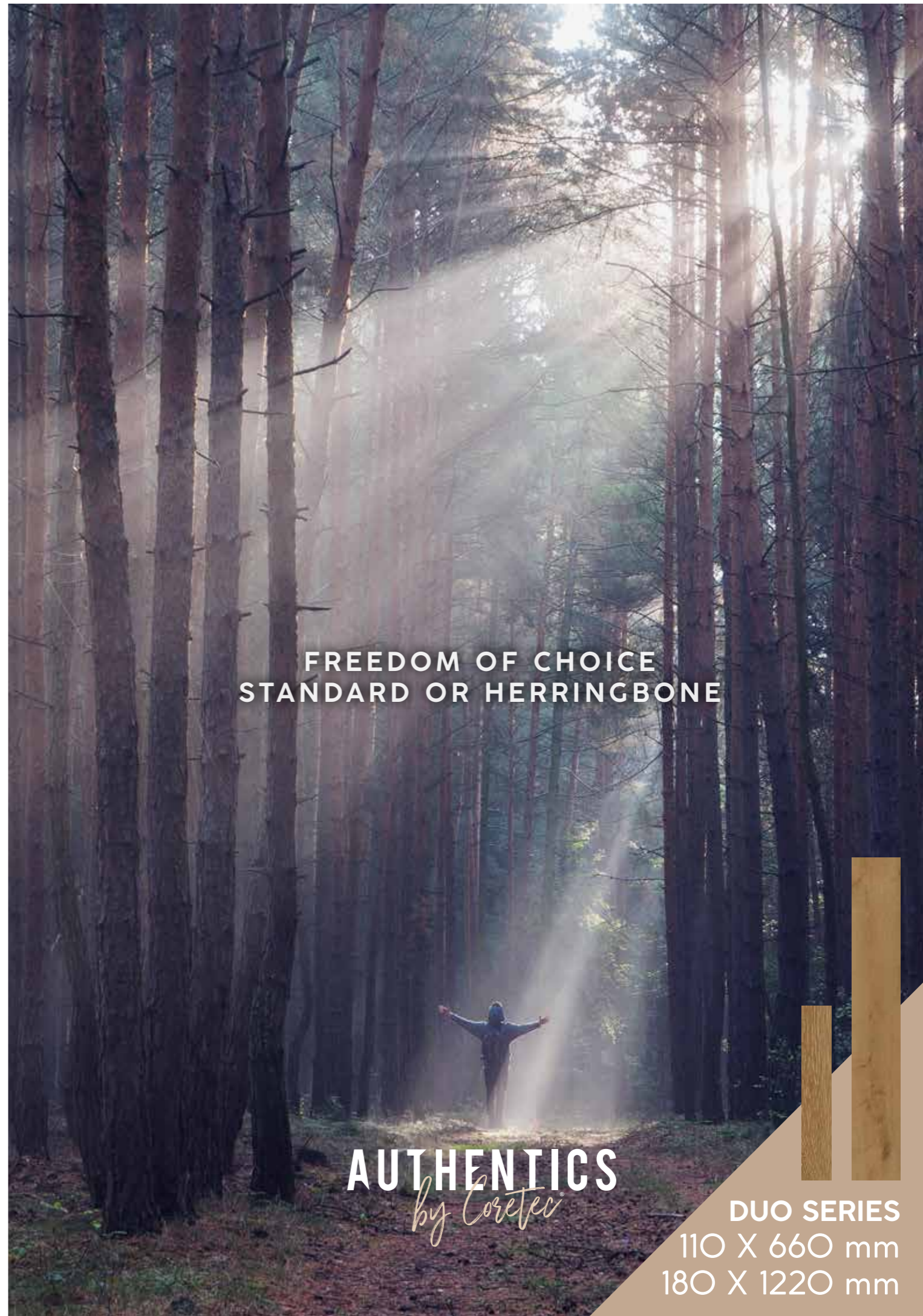
HAMILTON
50 LVR 135
180 X 1220 mm



KINGSTON
50 LVR 136
180 X 1220 mm



VICTORIA
50 LVRE 137
180 X 1220 mm



**FREEDOM OF CHOICE
STANDARD OR HERRINGBONE**

AUTHENTICS
by Coretec



DUO SERIES
110 X 660 mm
180 X 1220 mm



HALIFAX
50 LVREH 138
110 X 660 mm



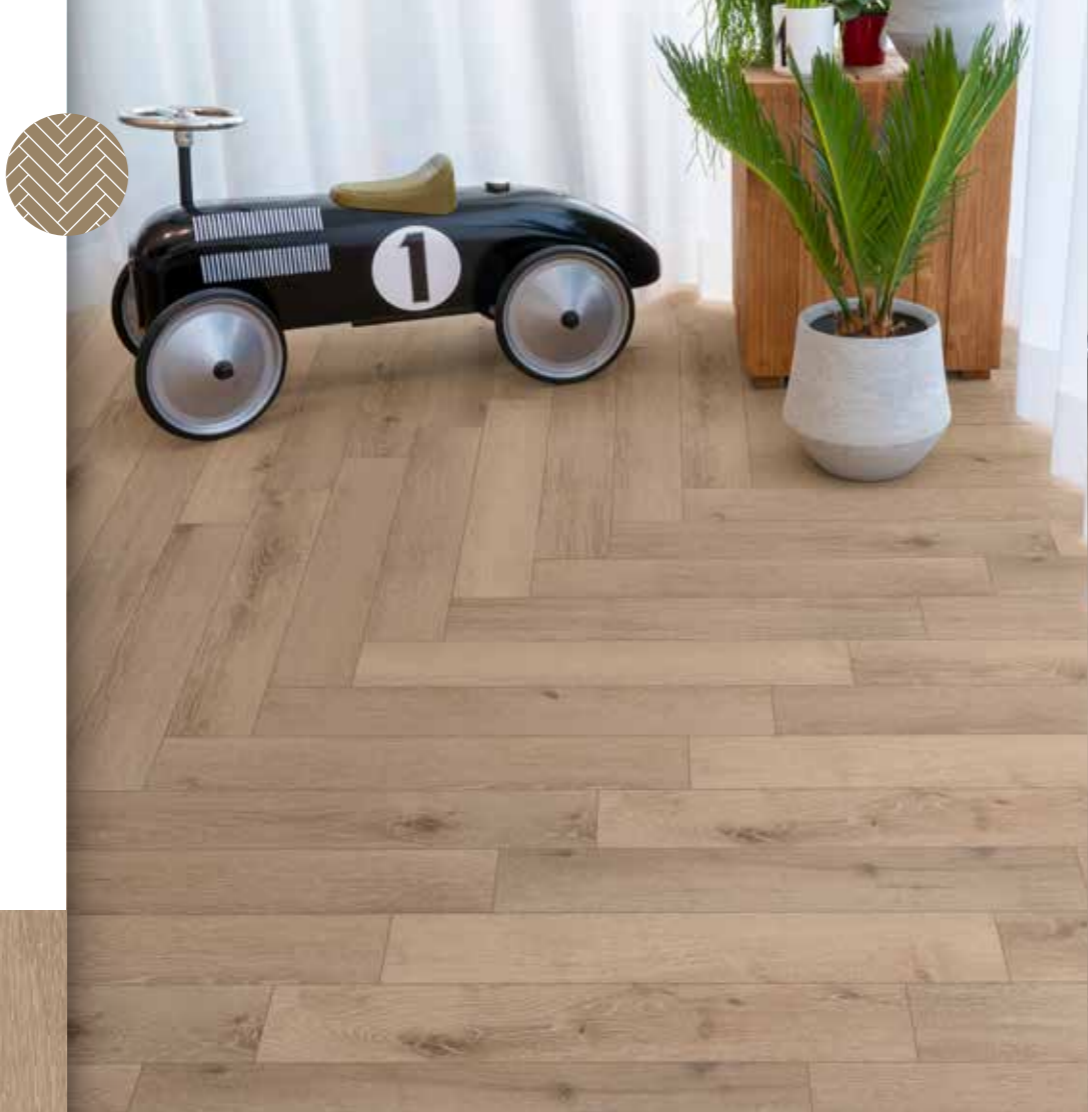
REGINA
50 LVREH 139
110 X 660 mm



HALIFAX
50 LVRE 138
180 X 1220 mm



REGINA
50 LVRE 139
180 X 1220 mm



NIMBUS
50 LVREH 140
110 X 660 mm



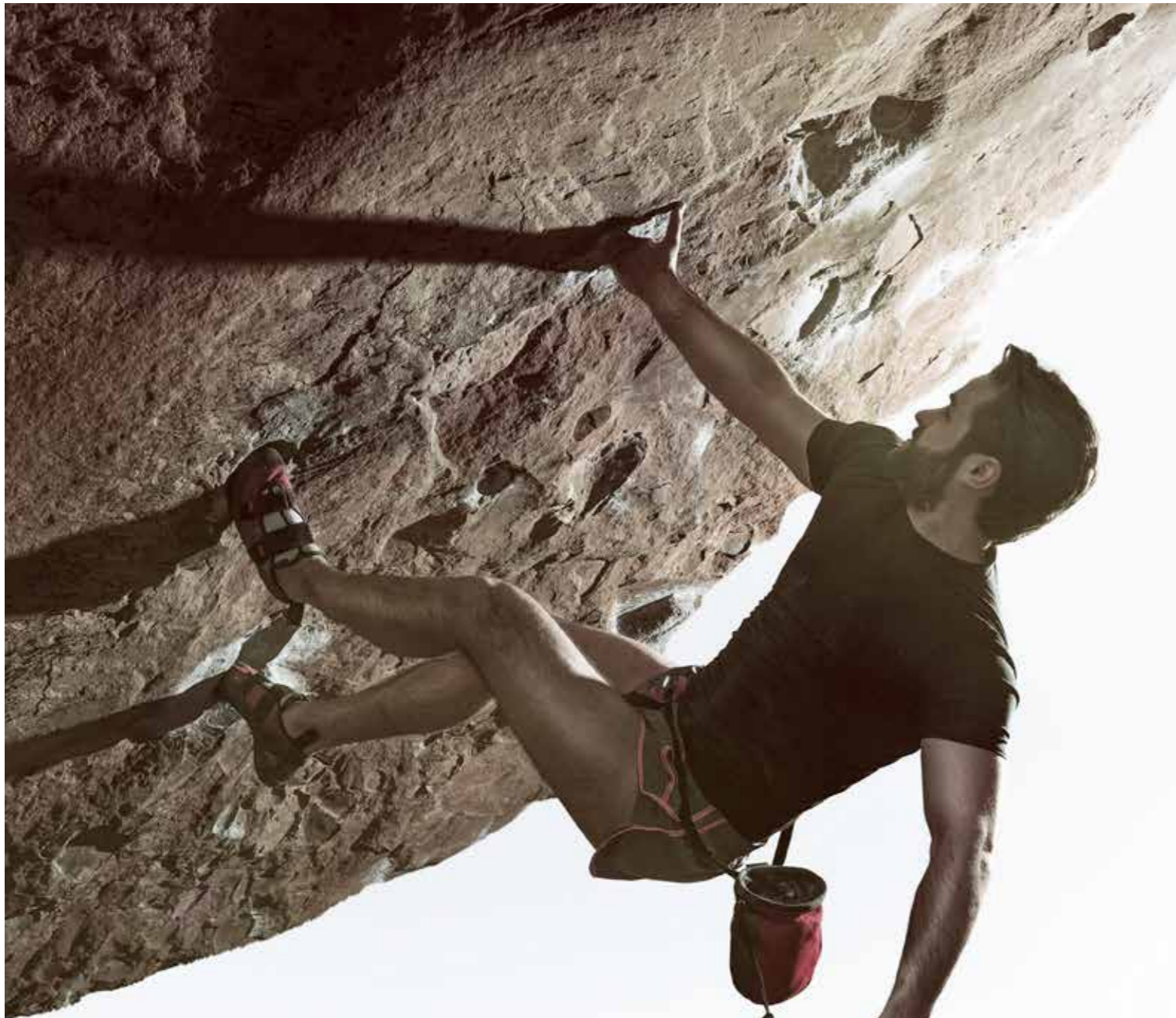
ALTO
50 LVREH 141
110 X 660 mm



NIMBUS
50 LVRE 140
180 X 1220 mm

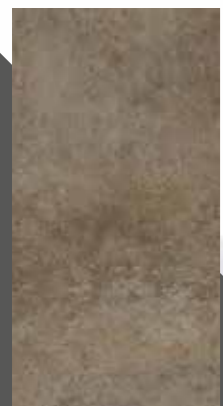


ALTO
50 LVRE 141
180 X 1220 mm



TOUCH IT, FEEL IT,
FROM TOP TO STONE

AUTHENTICS
by Coretec



SERIES
470 x 910 mm



CUMULUS
50 LVTE 153
470 x 910 mm



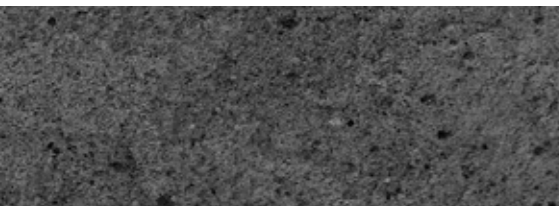
CLOUD
50 LVTE 151
470 x 910 mm



CIRRUS
50 LVTE 152
470 x 910 mm



CLEMENT
50 LVTE 154
470 x 910 mm



CYCLONE
50 LVTE 150
470 x 910 mm



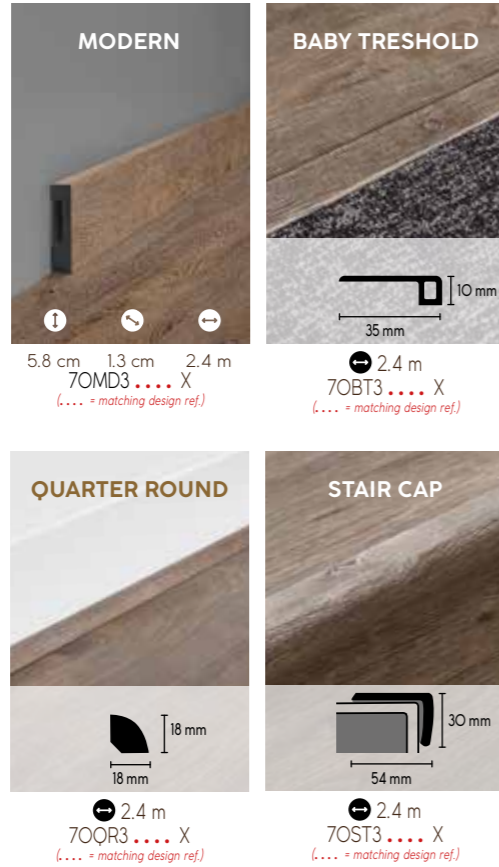
CHURCHILL
50 LVTE 155
470 x 910 mm



ACCESSORIES

Matching design accessories

Our design accessories match the design of your floor & are also 100% waterproof & shock resistant.



MAINTENANCE

The Clean, quick & green kit:

- Daily cleaner
- Deep cleaner
- Stain remover



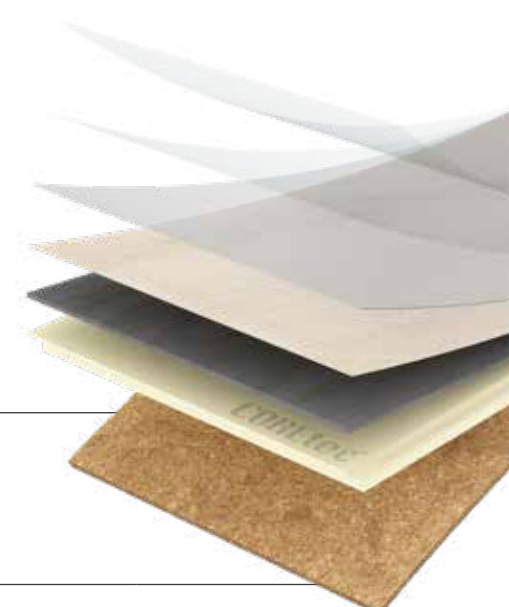
AUTHENTICS

by Coretec

TECHNICAL SPECIFICATIONS



	180 x 1830 mm	180 x 1500 mm	180 x 1220 mm	660 x 110 mm	910 x 470 mm
	2,65 m ² - 8 planks 23 kg/box - 8,68 kg/m ²	2,75 m ² - 10 planks 23 kg/box - 8,36 kg/m ²	2,65 m ² - 12 planks 23 kg/box - 8,68 kg/m ²	2,32 m ² - 32 planks 20 kg/box - 8,62 kg/m ²	2,59 m ² - 6 tiles 21,80 kg/box - 8,42 kg/m ²
	8,00 mm (EN ISO 24346)	8,00 mm (EN ISO 24346)	8,00 mm (EN ISO 24346)	8,00 mm (EN ISO 24346)	8,00 mm (EN ISO 24346)
	0,55 mm (EN ISO 24340)	0,55 mm (EN ISO 24340)	0,55 mm (EN ISO 24340)	0,55 mm (EN ISO 24340)	0,55 mm (EN ISO 24340)

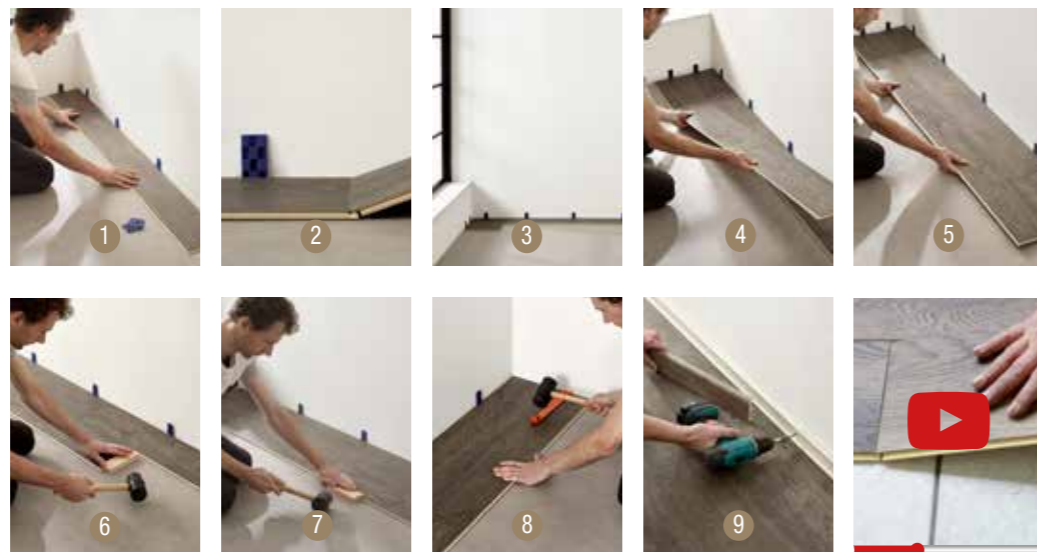


INSTALLATION

Easy to install

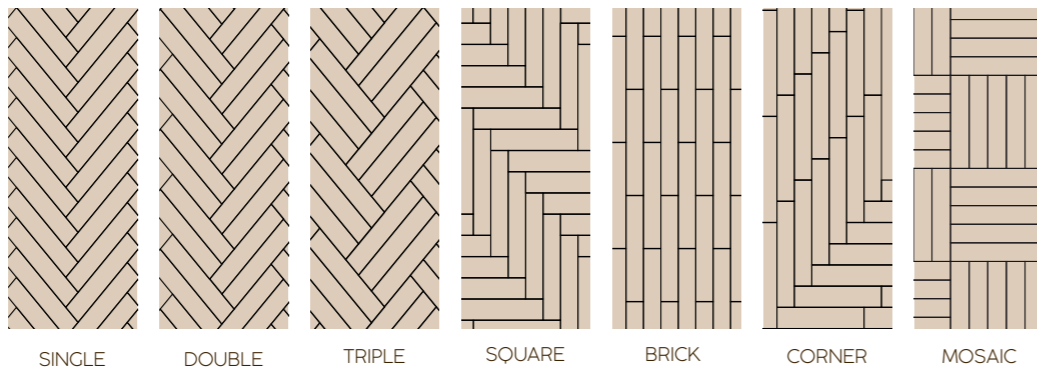
COREtec® floors have the easiest install in the market.

Follow the steps or watch our installation video on our website. Surf to www.coretecfloors.com/resource-center



Herringbone variations & installation

Mix & match your own style... Discover how to install herringbone on www.coretecfloors.com/resource-center



Level of use

Classe 23 / 33 (EN ISO 10874)

Geometrical characteristics

Conform (ISO 24337)

Wear resistance

Pass 5000 cycles (EN 13329 Annex E)

Castor chair resistance

Pass 25000 cycles (ISO 4918)

Effect of furniture leg

No visible change (EN 16581)

Residual indentation

≤ 0.10 mm (EN ISO 24343-1)

Resistance to staining

5 (no visible change) (EN 438-2)

Locking strength

LS ≥ 2.0 / SS ≥ 3.5 (EN 24334)

Dimensional stability

Pass ≤ 0.25% (EN ISO 23999)

Colour fastness to light

> grade 6 (ISO 105-B02)

Impact Sound Reduction

ΔL_w = 20 dB (ISO 10140-3 / EN 717-2)
ΔL_{LIN} = 10 dB (ISO 10140-3 / EN 717-1)

Formaldehyde emission class

E1 (EN 717-1)

Fire classification

Bfl - S1 (EN 13501)

Slip resistance

DS - RIO (EN 13893 / DIN 51130)

Underfloor heating

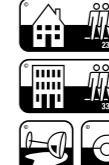
Suitable

Electrostatic performance

≤ 2 kV (EN 1815)

Thermal resistance

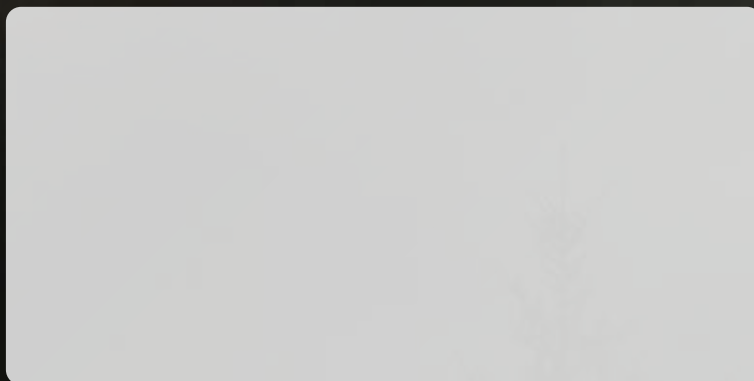
0.066 m²-K/W



Warranty (Years) The warranty covers manufacturing defects and premature wear in the event of normal use.

AUTHENTICS

by Coretec



Souverainestraat 27 - 9770 Kruisem (Belgium)
info@usfloors.be · www.coretecfloors.com